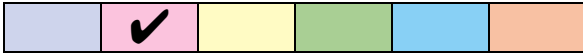


My Writing Ladder Target Card

Name - _____

Class - _____



Organisation

O4 I can begin to use an appropriate opening and ending in my writing.

O5 I can use appropriate organisational features for my writing - A newspaper report has a headline, a by-line, an introduction and then a chronological recount of events.

O6 I can use connectives that signal time, e.g. than, next, after, before.

O7 I can use simple connectives (e.g. also, as well, because, but) to link ideas logically.

Grammar Giants

G4 I can use full stops, capital letters, exclamation marks, question marks and commas for lists.

G5 I can use the possessive apostrophe for a singular person - the girl's book.

G6 I can use the present and past tenses correctly.

Purpose

P3 I know who my writing is for (my intended audience).

P4 I am beginning to use appropriate language across different types of writing - e.g. story language, non-fiction.

P5 I can think about the different styles needed for different types of writing.

Word Wonder Targets

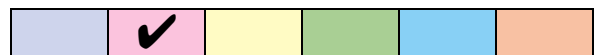
W3 I can use interesting adjectives to describe people, objects and setting.

W4 I can use interesting adverbs to describe actions.

My Writing Ladder Target Card

Name - _____

Class - _____



Organisation

O4 I can begin to use an appropriate opening and ending in my writing.

O5 I can use appropriate organisational features for my writing - A newspaper report has a headline, a by-line, an introduction and then a chronological recount of events.

O6 I can use connectives that signal time, e.g. than, next, after, before.

O7 I can use simple connectives (e.g. also, as well, because, but) to link ideas logically.

Grammar Giants

G4 I can use full stops, capital letters, exclamation marks, question marks and commas for lists.

G5 I can use the possessive apostrophe for a singular person - the girl's book.

G6 I can use the present and past tenses correctly.

Purpose

P3 I know who my writing is for (my intended audience).

P4 I am beginning to use appropriate language across different types of writing - e.g. story language, non-fiction.

P5 I can think about the different styles needed for different types of writing.

Word Wonder Targets

W3 I can use interesting adjectives to describe people, objects and setting.

W4 I can use interesting adverbs to describe actions.

W5 I can show evidence of using simple similes - It was as yellow as the sun.

Super Spelling

S6 I can spell 10 words with contractions (it's, can't, won't, they're etc).

S7 I can spell most of the common exception words – See your teacher.

S8 I can spell the first 11 sets of homophones/near homophones (e.g. there/their/they're) – See your teacher.

S9 I can add suffixes to spell longer words- e.g. -ment, -ful, - less, -ly.

Handwriting Hero

H8 I can consistently sit correctly at a table, holding a pencil comfortably and correctly.

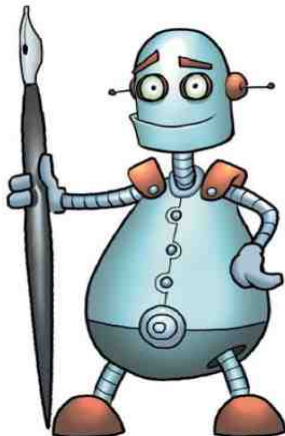
H9 I can use spacing between words that reflect the size of my letters.

H10 I can rest nearly all of my letters on the lines of my page.

H11 I can form lower-case letters of the correct size, relative to one another.

H12 I can mostly write capital and lower case letters of the correct size, orientation and relationship to one another.

H13 I can join all of my lower case letters.



W5 I can show evidence of using simple similes - It was as yellow as the sun.

Super Spelling

S6 I can spell 10 words with contractions (it's, can't, won't, they're etc).

S7 I can spell most of the common exception words – See your teacher.

S8 I can spell the first 11 sets of homophones/near homophones (e.g. there/their/they're) – See your teacher.

S9 I can add suffixes to spell longer words- e.g. -ment, -ful, - less, -ly.

Handwriting Hero

H8 I can consistently sit correctly at a table, holding a pencil comfortably and correctly.

H9 I can use spacing between words that reflect the size of my letters.

H10 I can rest nearly all of my letters on the lines of my page.

H11 I can form lower-case letters of the correct size, relative to one another.

H12 I can mostly write capital and lower case letters of the correct size, orientation and relationship to one another.

H13 I can join all of my lower case letters.

