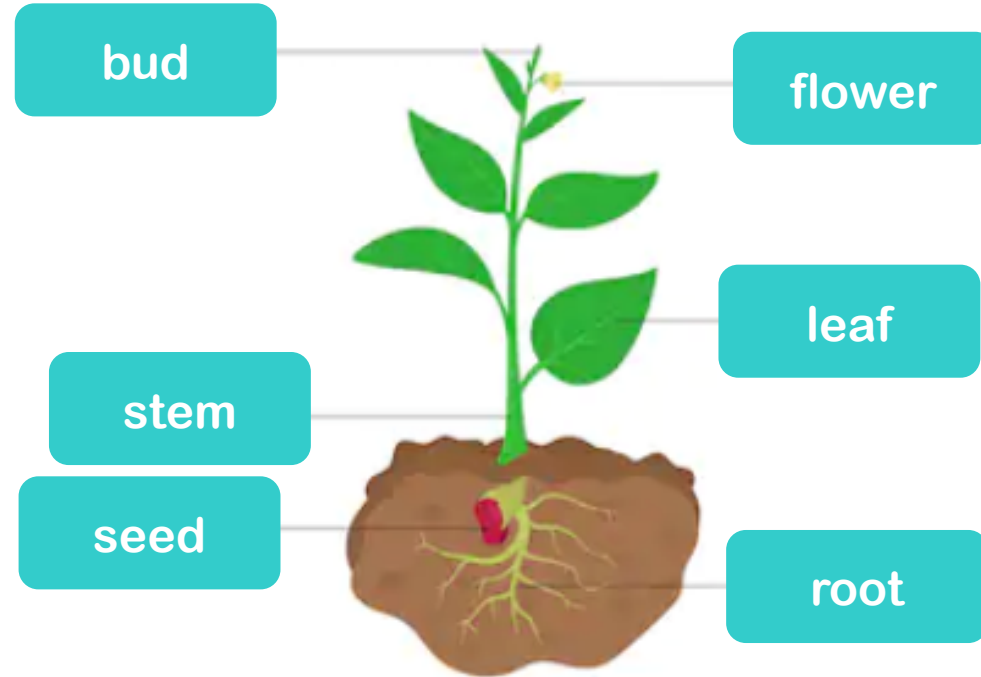
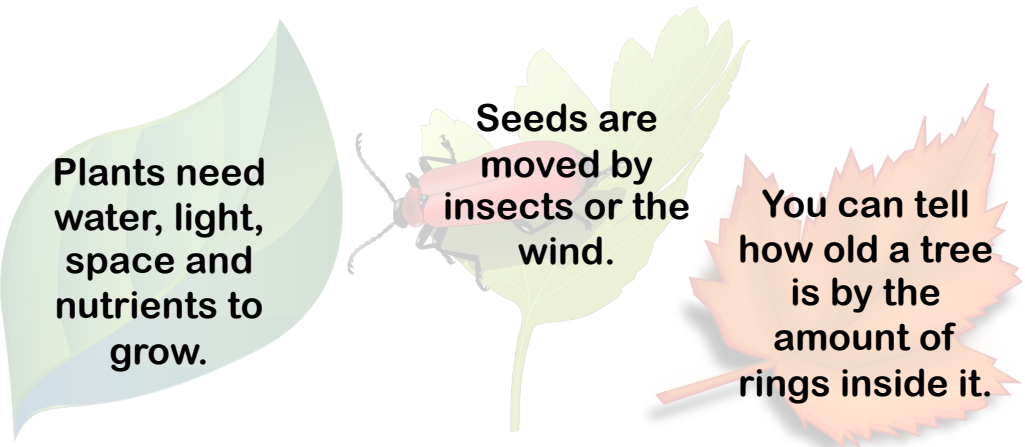


GR8! – 8 words and meanings to learn

Key Word	Meaning
1. seed	A small round or oval object produced by a plant.
2. root	The part of a plant that grows down into the earth to get water and food.
3. flower	The blossom of a plant.
4. stem	Stick-like central part of a plant that grows above the ground from which leaves grow.
5. crop	The name given to vegetable, cereal or grain that is grown to sell.
6. leaf	The flat, green part of a plant joined at one end to the stem.
7. fruit	Made by plants and usually come from flowers, we eat fruit and they are healthy.
8. grain	Wheat or other cereal grown to be used as food.



- Lesson 1 • Understand what a plant needs in order to grow
- Lesson 2 • Know the basic parts of a plant
- Lesson 3 • Identify and describe the basic structure of a variety of flowering plants and trees
- Lesson 4 • Understand the difference between an evergreen and deciduous tree
- Lesson 5 • Know about different sources of food grown by farmers
- Lesson 6 • Know how plants change over time



Before and After...

Question 1: If you are caring for a plant, which of these should you do?	Start of unit:	End of unit:
Put your plant in a fridge		
Water your plant regularly		
Put it in a cupboard		
Cut the leaves off		
Remove all flowers		

Question 2: To grow a plant, you must first place a _____ in soil.	Start of unit:	End of unit:
seed		
flower		
petal		
stem		
thistle		
rod		

Question 3: Answer yes or not. A plants needs:	Start of unit:	End of unit:
water		
sunlight		
soil		
garden		
pot		

Question 4: Match these words to the description:	Start of unit:	End of unit:
deciduous		
coniferous		

A tree that loses its leaves in the autumn every year

A tree that has leaves all year round

Question 5: Match these words to the correct description	Start of unit:	End of unit:
wild		
garden		

A piece of land that is part of a house where plants, trees and vegetables can grow

Animals and plants that are not looked after by people