

# photosynthesis

carbon dioxide + water → oxygen + glucose



Types of seed dispersal

## Lesson sequence

1

Describe how plants soak up water

2

Explain how water and food moves around a plant

3

Explain how plants make their own food

4

Name the parts of the flower and describe what they do

5

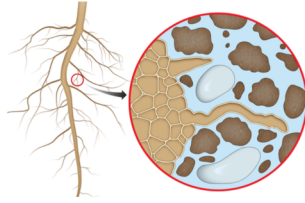
Describe the process of pollination

6

Describe the different ways plants share their seeds

# Knowledge Organiser Plants – Life Cycles

## Diagrams and Pictures - What do I need to know?

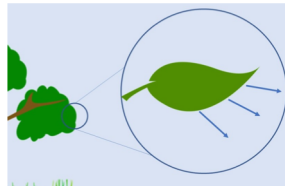
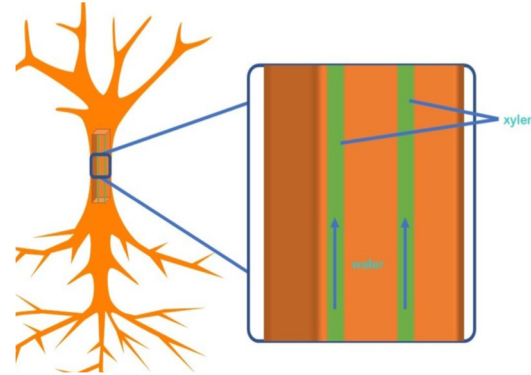


### ROOT HAIRS

These are tiny strands on roots which absorb the water and nutrients from the soil.

### XYLEM and PHLOEM

This diagram shows how the phloem work. They are a bit like veins – they go right from the roots, through the stem, to leaves. They transport water. Phloem are similar, but they move the food and nutrients.

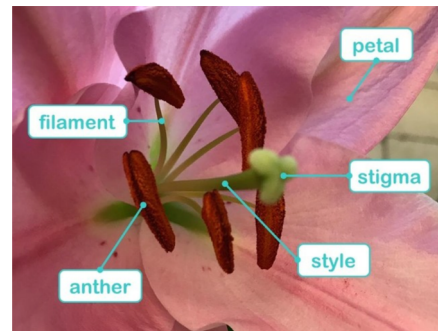


### TRANSPIRATION

Water escapes from the leaves, which forces the plant to suck more water up via the xylem to replace what it has lost.

### PARTS OF A FLOWER

All these parts are vital. The **petal** is bright and pretty to attract insects. The **anther** makes pollen and is held up by the **filament**. The **stigma** is sticky to stop the pollen dropping, and this sits on a tall **style** to make sure the insect can find it!



## ROCKET WORDS

Learn these words and their definitions.



| Key Word       | Definition   |
|----------------|--|
| transpiration  | Water escaping through plant leaves.   |
| photosynthesis | The chemical reaction in plants that allows them to make their own food                    |
| carbon dioxide | A colourless, odourless gas, it is taken in by plants.                                     |
| pollination    | The process of moving pollen from one flower to another.                                   |
| dispersal      | The spreading of a plant's seeds over a wide area.   |
| xylem          | A tube that transports water from the roots, through the stems, to the leaves.             |
| phloem         | A tube that transports food and nutrients from the roots, through the stem, to the leaves. |
| glucose        | A sugar made during photosynthesis.  |